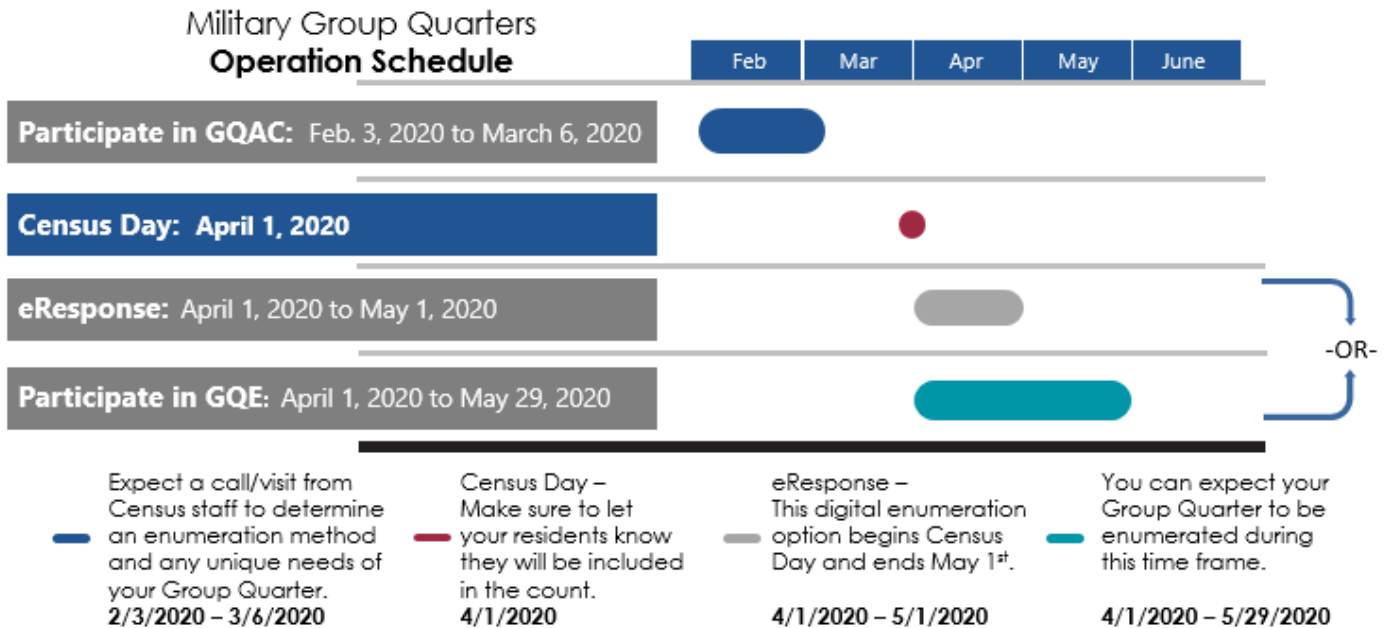


# Military Group Quarters

## 1. WHEN will my facility be counted?



## 2. HOW will my facility be counted?

**Definition:** Military Group Quarters are military personnel living in barracks including open barrack transient quarters and dormitories.

### Residency Criteria:

- Military Group Quarters and Military Ships are recognized separately under Census enumeration operations. **Military Ships are considered “out-of-scope”** for the Group Quarters Operation.
- Patients in Military Treatment Facilities are **counted as part of Healthcare Group Quarters** (not as a Military Group Quarter).
- People being held in military disciplinary barracks and jails are **counted as part of Correctional Group Quarters** (not as a Military Group Quarter).

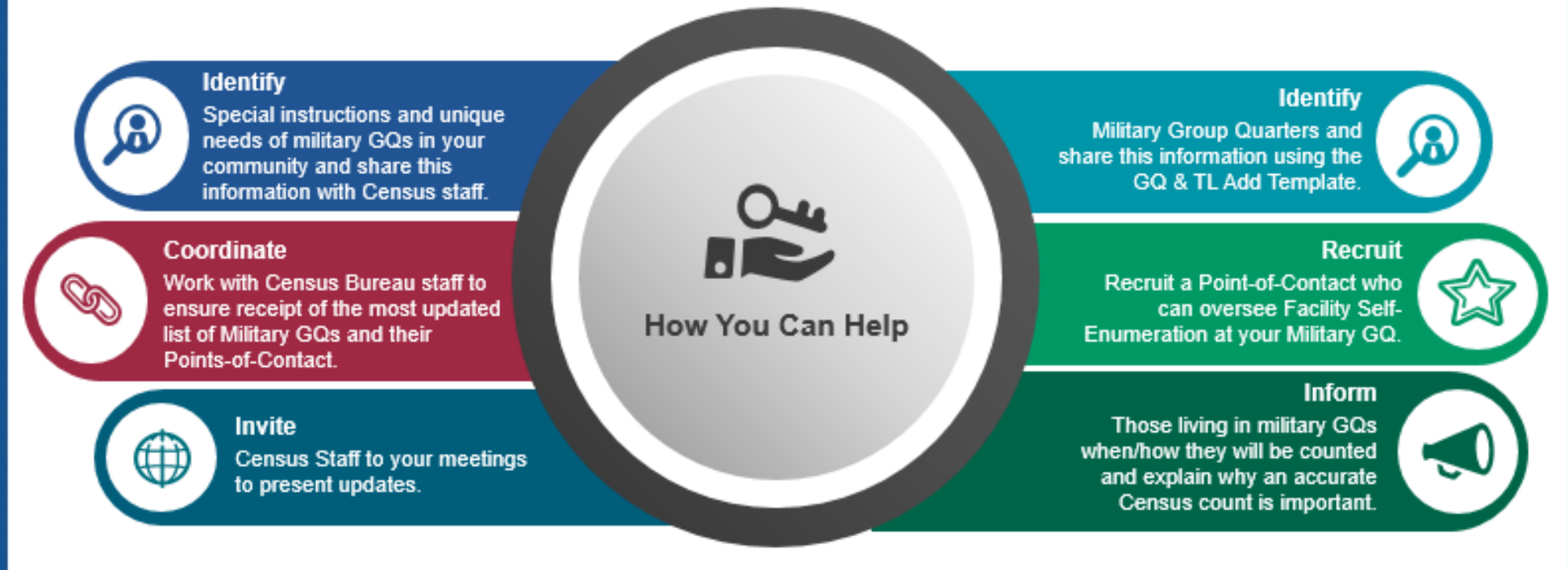
**Facility Self-Enumeration is the only enumeration method available for Military GQs.**

Shape  
your future  
START HERE >

United States<sup>®</sup>  
Census  
2020

# Military Group Quarters

## 3. WHAT can I do to help?



## 4. WHO can I contact?

Please submit questions and requests for the GQ & TL Add Template to:

**Adley Kloth, Area Manager**

LA RCC GQ ETL OPS

Email: [larccgqetlops@uscensus.onmicrosoft.com](mailto:larccgqetlops@uscensus.onmicrosoft.com)

Shape  
your future  
START HERE >

United States<sup>®</sup>  
**Census**  
**2020**